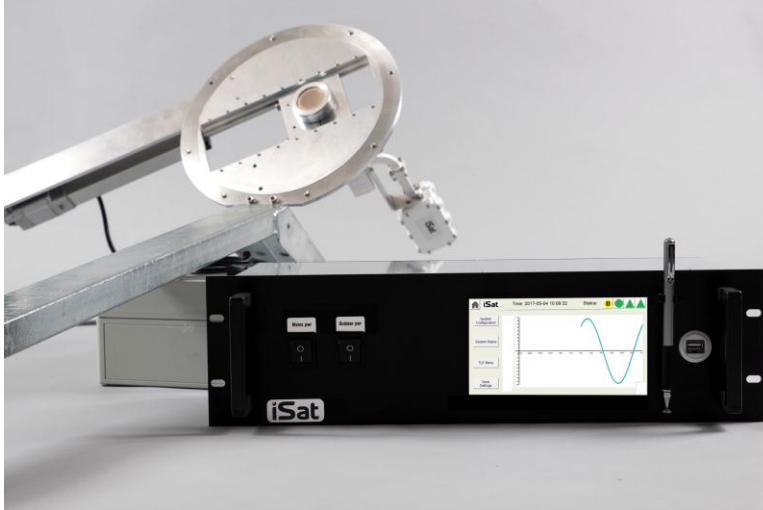


Tracking feed for Inclined Satellites



iSat's innovative Tracking Feed provides simple and affordable access to low-cost, inclined-orbit satellite bandwidth – bandwidth that would otherwise only be accessible using expensive motorised antennas.

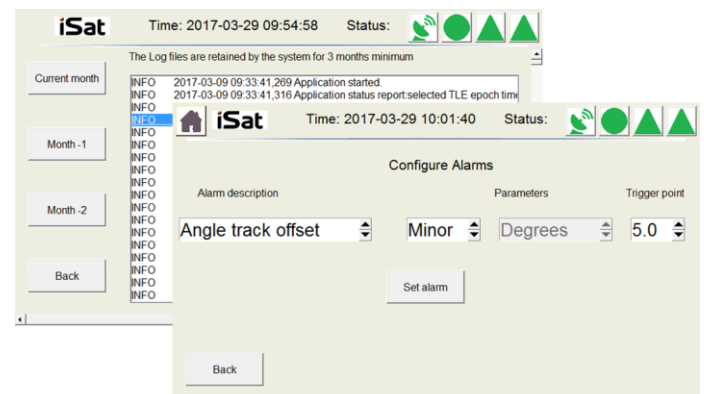
This low-cost solution is simple to implement and can provide a positive ROI within a few months of operation.

The iSat Tracking Feed features:

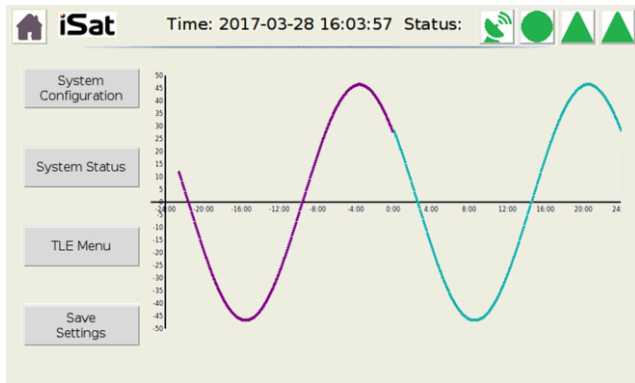
- Fully unattended operation.
- Safe restart after power outage.
- Single motor operation so neighbouring satellites are safe.
- Suitable for use on 1.2 to 3.8 m offset reflectors in C, X and Ku band.
- Tracks inclined-orbit satellites without breaching the side-lobe template mask.
- Retains compliance with the cross-polarisation template.
- Fully re-useable indoor unit- can be redeployed to other satellites.
- Outdoor mechanical feed-holders available if required to re-deploy on other reflectors.
- Retrofit to existing GEO terminal. Simple nut and bolt assembly for re-use with existing feed.
- Full turnkey 'inclined terminals' available pre-configured for total piece of mind.

Simple and reliable construction

- Single Ethernet cable connection to outdoor unit.
- Highly stable, industrial-grade software code.
- Modern touch-screen interface backed by state-of-the-art electronics.
- Alarms and log files retained for 3 months for performance review.



iSat Tracking Feed Program



The **Tracking Feed Innovation** is a development made possible by the **convergence** of RF technology with orbital dynamics to bring **tracking solutions** with a high **ROI** to the satellite communications industry for the first time.

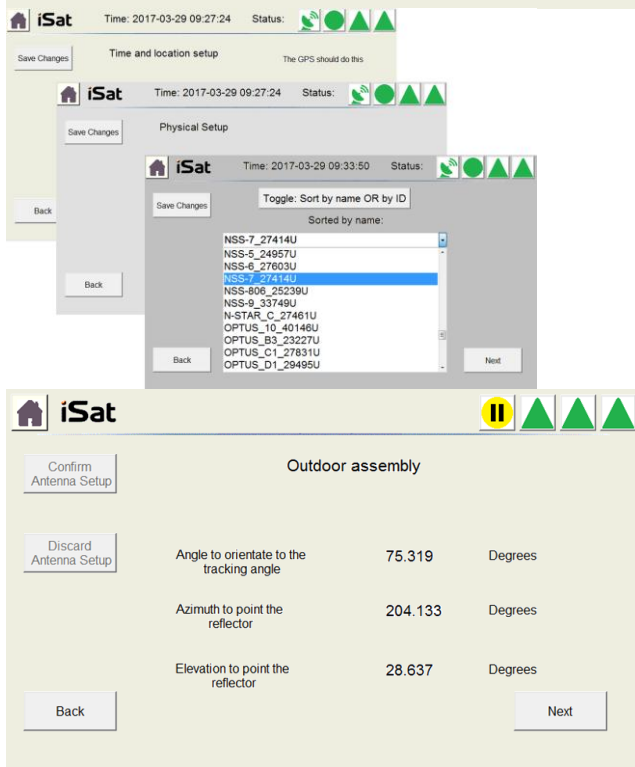
Upon power-up, the Home page provides access to the configuration menus which allow user to configure the system.

The time and location is set automatically by the GPS antenna. The physical setup requires the antenna size.

The satellite is selected from a drop-down list which can be sorted in either name or satellite ID order.

The unit then computes the tracking angle and is ready to track – the feed movement is plotted on the Home page as it tracks the satellite.

The complete system is designed to be a retro-fit item with low power consumption and delivered by courier.



Operational

- IP66 rated outdoor motor.
- 19 inch 3U rack Indoor Unit; 150mm deep.
- Mains input.
- Wind loading of original antenna retained.
- Power over Ethernet to outdoor unit
- Ethernet connector to WAN for TLE
- USB socket for TLE file transfer.

